

Helgoland

Carlotta de Bevilacqua

Artemide[®]

helgoland

Helgoland

Carlotta de Bevilacqua
2023

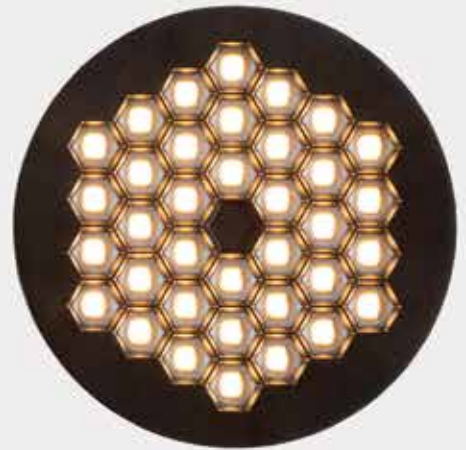
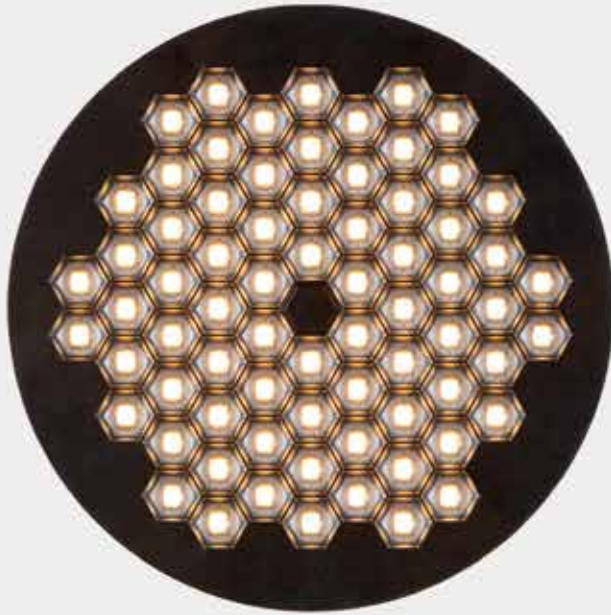
Helgoland is an efficient and perfectly controlled light principle that applies to an incremental, compact and optimised geometry, capable of casting good light into any space. The patented technology of the refractive optics is miniaturised and developed according to an hexagonal mesh that maximises the density of the luminous flux emitted. The hexagonal geometry makes it possible to place the elements side by side without wasting space, according to the shape of a honeycomb.

This model is inspired by nature, by the intelligence of bees. The geometry enables free, linear or radial-centric growth just as in these first versions of Helgoland.

→ PATENT OF INVENTION: OPTICS



Artemide
App

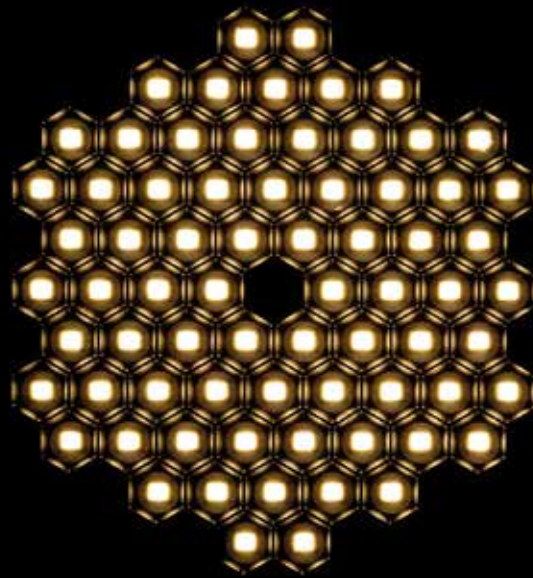


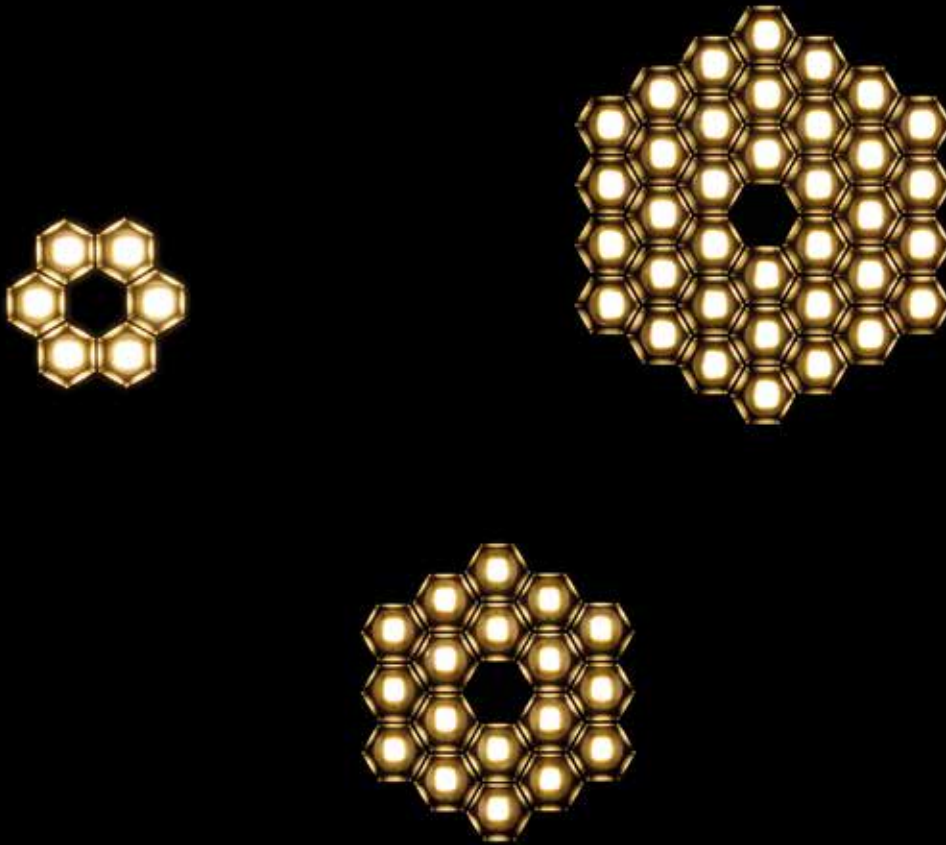
Scale 1:2

For further information on Helgoland
↪ visit [artemide.com](https://www.artemide.com)

Helgoland archipelago

Incremental optical geometry





Esarefractive lens

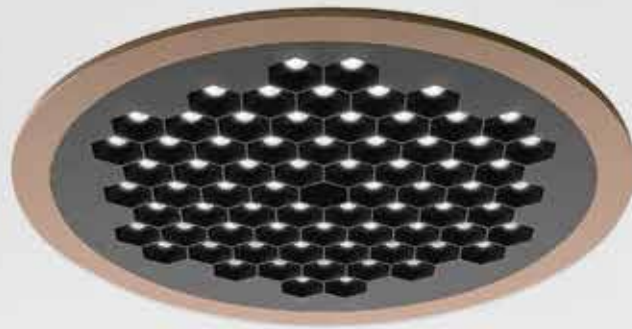
Maximized flux density per unit area

Scalable platform

Sustainable principles

Incremental principle

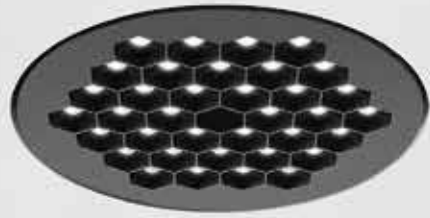
Multiple features



Four different performances

Five colour finishes

A wide range of installation types



Installation accessories



Trimless



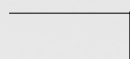
Trim



Light engine



Magnetic fixing



12,5 mm



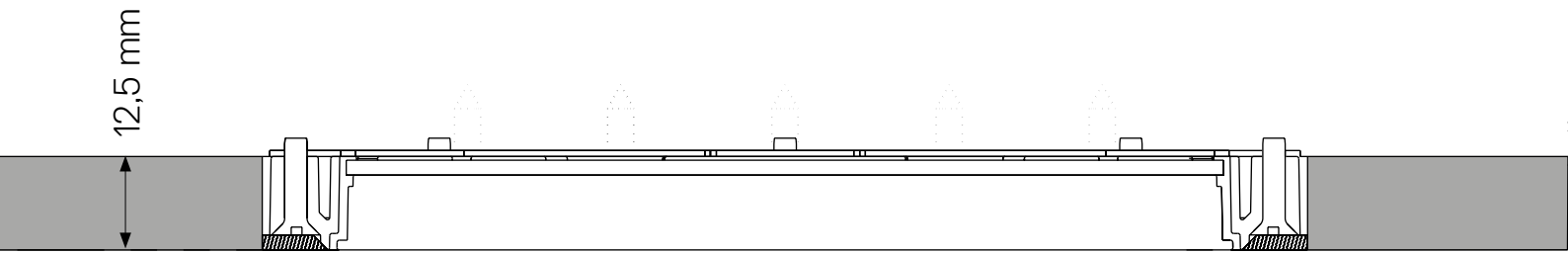
SMD no driver



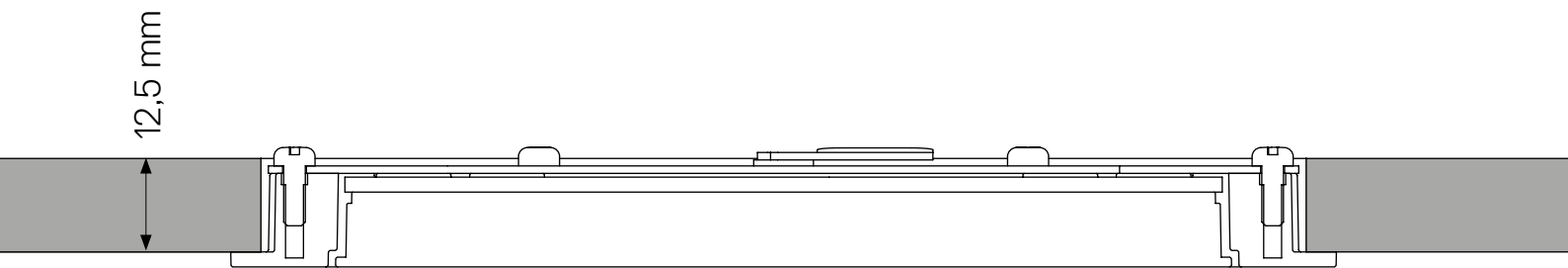
SMD Built-in driver

Collaborative Units

Helgoland has an optimised construction also with respect to the structure of the various versions. The light engine is in fact an element which can be combined through an easy magnetic fixing system with various accessories: for recessed version, with or without a frame, or ceiling installation, with or without driver, up to an adjustable arm that connects it to other systems and tracks in the collection.



Trimless

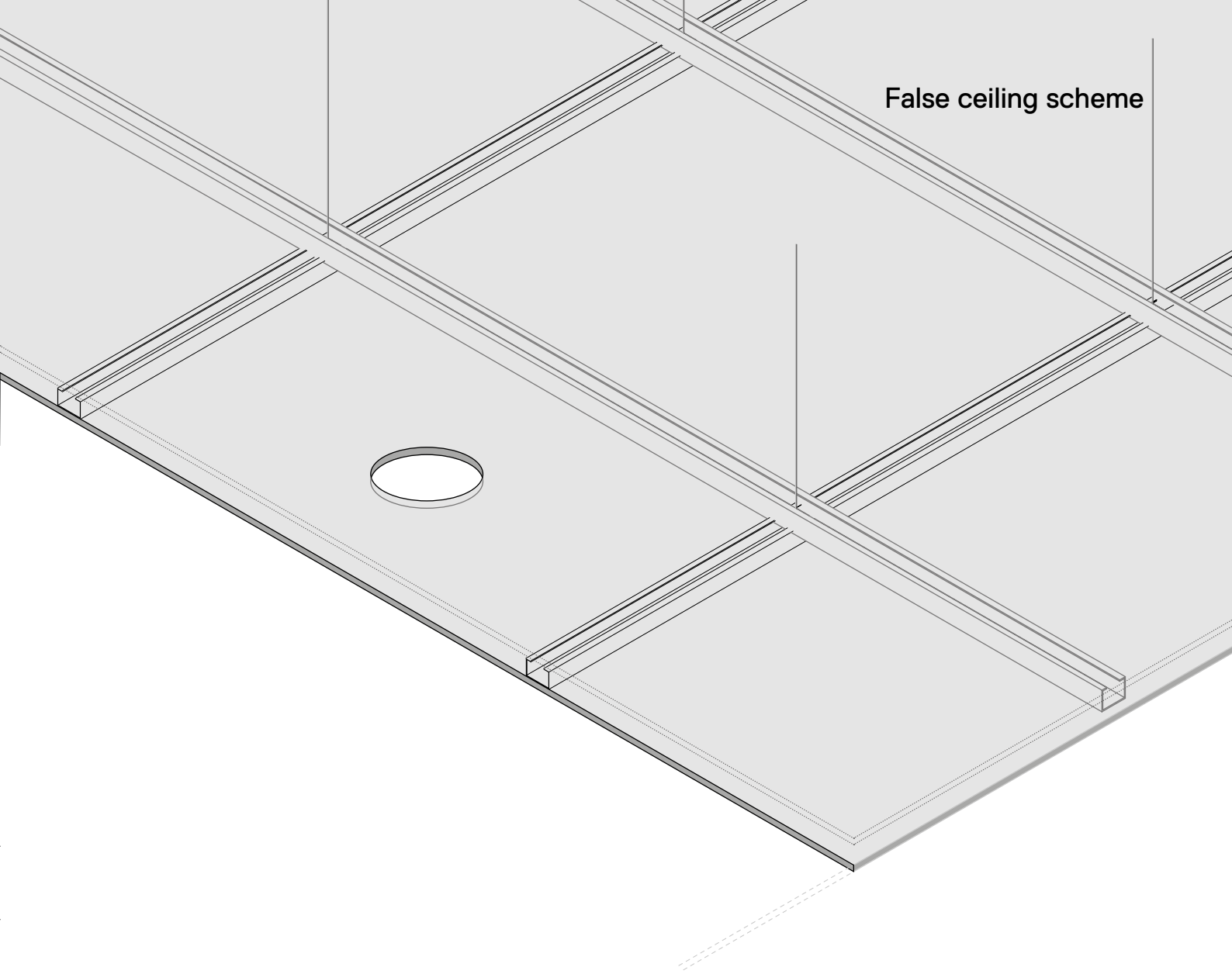


Trim

h 12.5 mm for Recessed version

The downlight can be integrated into the standard plasterboard thickness without interfering with the structural warping.

On demand for other thicknesses needed.



False ceiling scheme

Reduce to innovate

Thanks to its optimized structure and minimal dimensions, Helgoland recessed adapts to any environment at any time.

Furthermore, its thickness of 12.5 mm allows it to be integrated into the standard thickness of the plasterboard without interfering with the structural framework.

Affirming the spatial freedom of each project, Helgoland is the appropriate lighting solution for applications where the reduced thickness above the plasterboard ceiling represents an architectural constraint.



Workplaces

Desks area - Helgoland 160 Recessed trim XF 60°

Corridor - Helgoland 90 Recessed trim WF 38°





Hospitality

Helgoland 120 Recessed trimless WF 38°

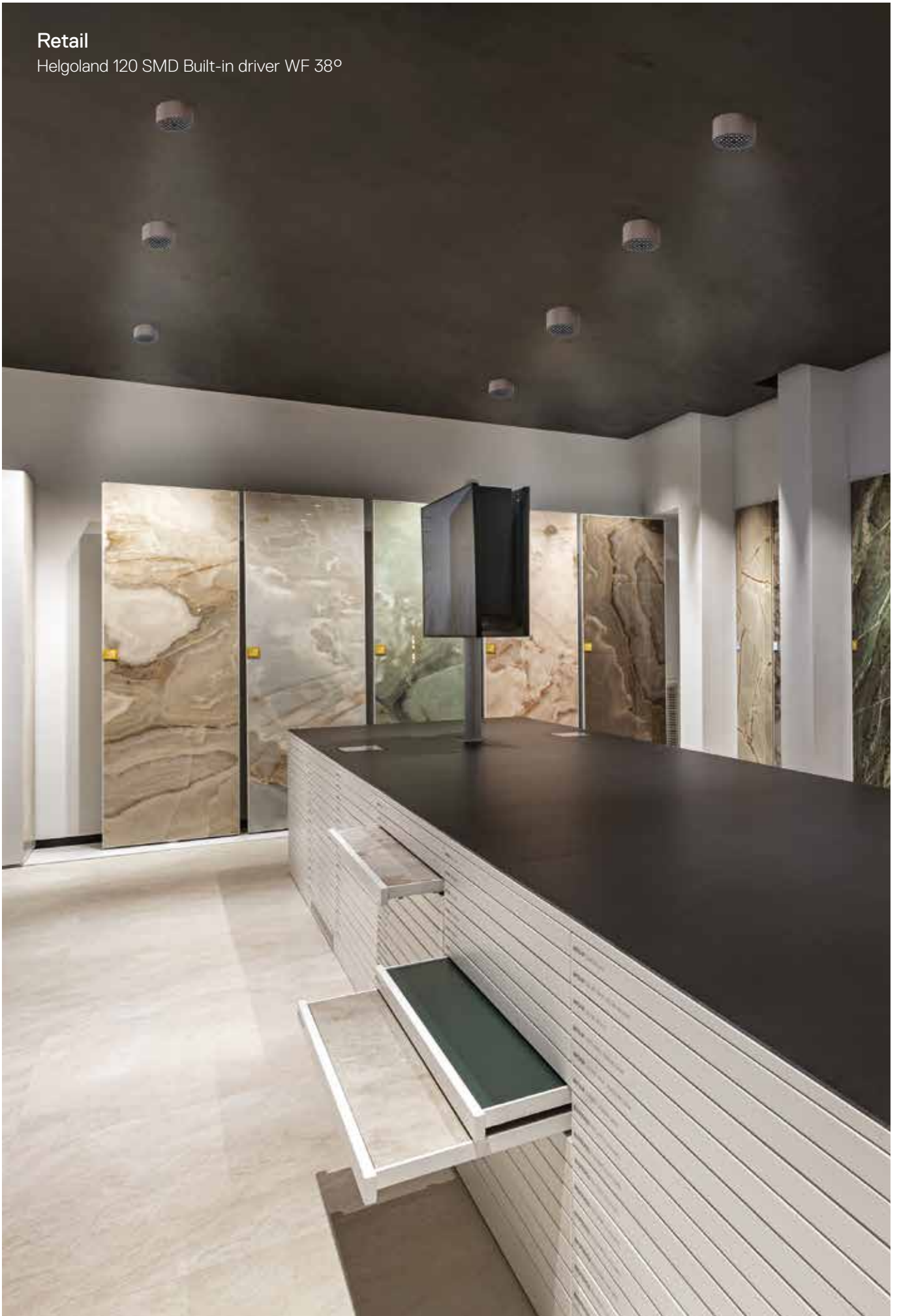


Museum

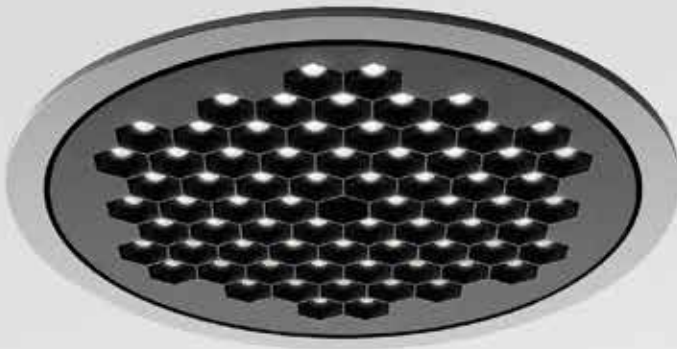
Helgoland 60 Recessed trimless FL 28°

Retail

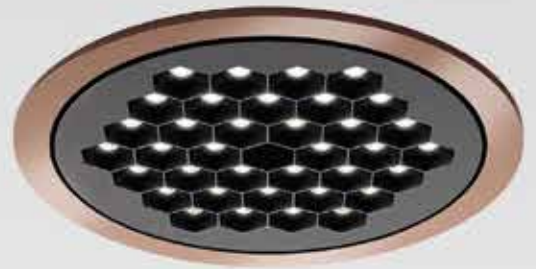
Helgoland 120 SMD Built-in driver WF 38°



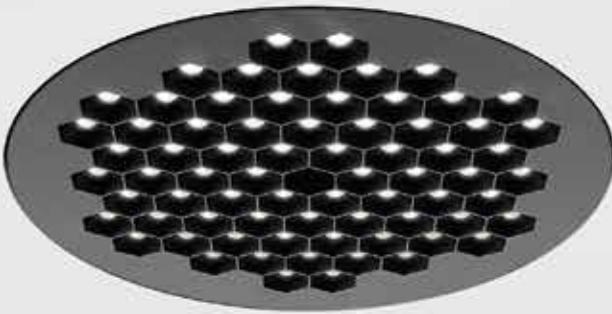
Trim



Helgoland 160



Helgoland 120



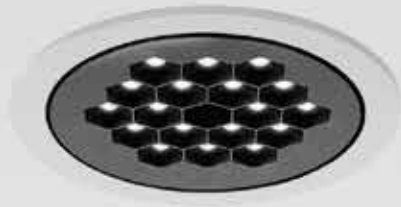
Trimless

Frame - Trim

- Black
- White
- Silver
- Copper
- Cobalt blue

Light engine

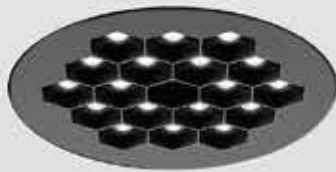
- Black



Helgoland 90

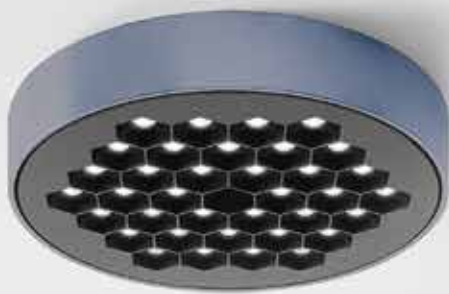


Helgoland 60

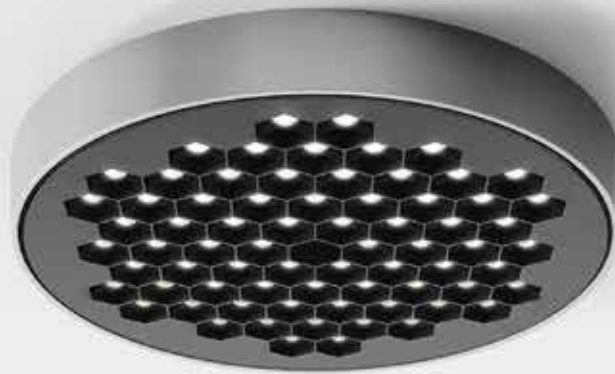


Helgoland

Recessed version



Helgoland 120



Helgoland 160

Frame - Trim

- Black
- White
- Silver
- Copper
- Cobalt blue

Light engine

- Black



Helgoland 60



Helgoland 90

Helgoland

SMD No driver version



Helgoland 160



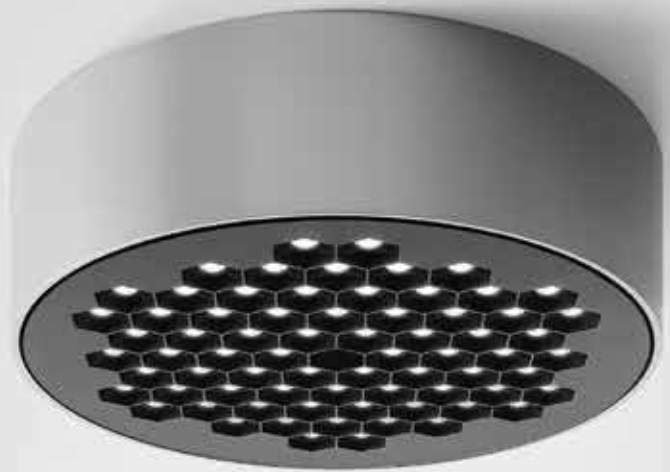
Helgoland 120

Frame - Trim

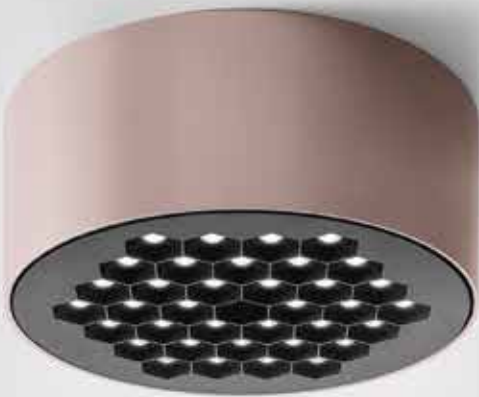
- Black
- White
- Silver
- Copper
- Cobalt blue

Light engine

- Black



Helgoland 160



Helgoland 120

Helgoland

SMD Built-in driver version

Responsible energy consumption

up to 150 lm/W

High efficiency

Up to 80%

Extreme glare control

UGR<19

High uniformity

No multi-shadows

CRI 90

60 mm



Helgoland 60 (6 LEDs)

Ø 60 x h 12,5 mm
Total power: 2,6W
3000K



FL 28° 319lm
WF 38° 377lm
XF 60° 367lm

90 mm



Helgoland 90 (18 LEDs)

Ø 90 x h 12,5 mm
Total power: 6W
3000K



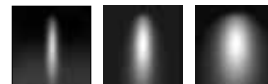
FL 28° 756lm
WF 38° 893lm
XF 60° 869lm

120 mm



Helgoland 120 (36 LEDs)

Ø 120 x h 12,5 mm
Total power: 8,5W
3000K



FL 29° 1080lm
WF 38° 1277lm
XF 60° 1243lm

160 mm



Helgoland 160 (72 LEDs)

Ø 160 x h 12,5 mm
Total power: 17W
3000K



FL 28° 2141lm
WF 38° 2530lm
XF 60° 2463lm



FL 28° (2X14°)

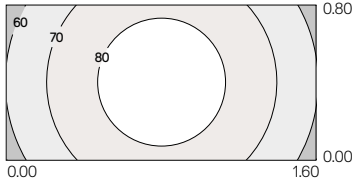


WL 38° (2X19°)

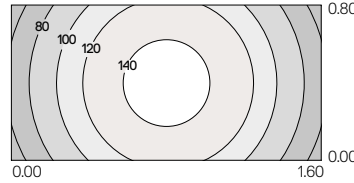


XF 60° (2X30°)

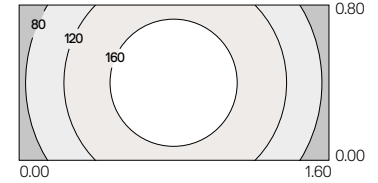
Helgoland 60
3000K



Installation h 3200 mm - Desk h 750 mm
 $E_{av} = 119 \text{ lx}$ $u_0 = 0,352$

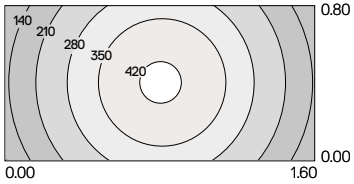


Installation h 3200 mm - Desk h 750 mm
 $E_{av} = 110 \text{ lx}$ $u_0 = 0,539$

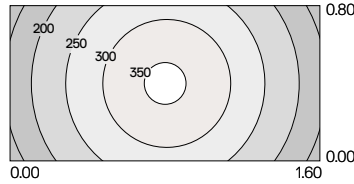


Installation h 3200 mm - Desk h 750 mm
 $E_{av} = 72 \text{ lx}$ $u_0 = 0,788$

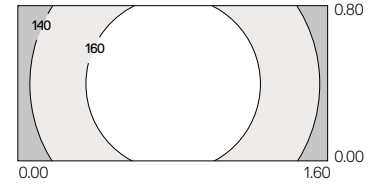
Helgoland 90
3000K



Installation h 3200 mm - Desk h 750 mm
 $E_{av} = 271 \text{ lx}$ $u_0 = 0,371$

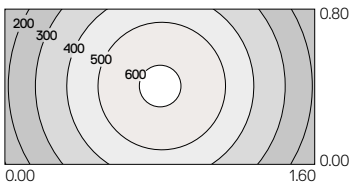


Installation h 3200 mm - Desk h 750 mm
 $E_{av} = 259 \text{ lx}$ $u_0 = 0,562$

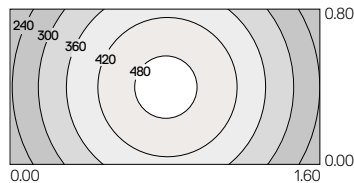


Installation h 3200 mm - Desk h 750 mm
 $E_{av} = 159 \text{ lx}$ $u_0 = 0,799$

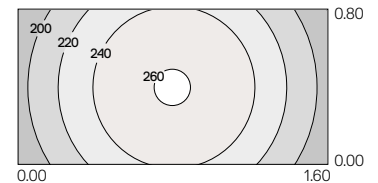
Helgoland 120
3000K



Installation h 3200 mm - Desk h 750 mm
 $E_{av} = 390 \text{ lx}$ $u_0 = 0,359$

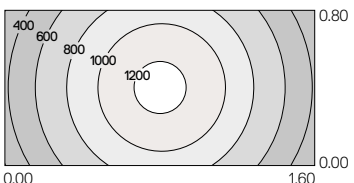


Installation h 3200 mm - Desk h 750 mm
 $E_{av} = 367 \text{ lx}$ $u_0 = 0,562$

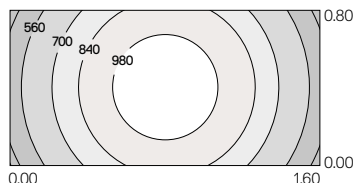


Installation h 3200 mm - Desk h 750 mm
 $E_{av} = 229 \text{ lx}$ $u_0 = 0,793$

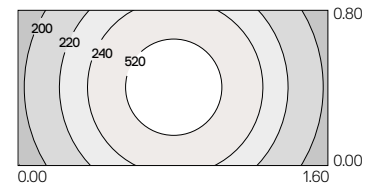
Helgoland 160
3000K



Installation h 3200 mm - Desk h 750 mm
 $E_{av} = 792 \text{ lx}$ $u_0 = 0,356$



Installation h 3200 mm - Desk h 750 mm
 $E_{av} = 785 \text{ lx}$ $u_0 = 0,529$



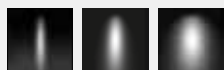
Installation h 3200 mm - Desk h 750 mm
 $E_{av} = 472 \text{ lx}$ $u_0 = 0,782$

HELGOLAND LIGHT ENGINE

Black



04



FL 28° WF 38° XF 60°

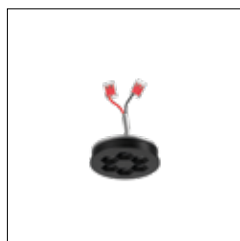
MacAdam 3SDCM
Life L70(17k) 102000h
CRI=90

IP20



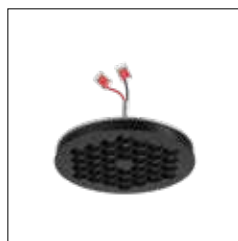
Light Engine

W	Size	Beam	Flux	CCT*	Code
2,6W	60 mm	FL 28°	319lm	3000K	AX004. 04
			319lm	4000K	AX005. 04
		WF 38°	377lm	3000K	AX000. 04
			377lm	4000K	AX001. 04
		XF 60°	367lm	3000K	AX002. 04
			367lm	4000K	AX003. 04
6W	90 mm	FL 28°	756lm	3000K	AX054. 04
			756lm	4000K	AX055. 04
		WF 38°	893lm	3000K	AX050. 04
			893lm	4000K	AX051. 04
		XF 60°	869lm	3000K	AX052. 04
			869lm	4000K	AX053. 04
8,5W	120 mm	FL 28°	1080lm	3000K	AX104. 04
			1080lm	4000K	AX105. 04
		WF 38°	1277lm	3000K	AX100. 04
			1277lm	4000K	AX101. 04
		XF 60°	1243lm	3000K	AX102. 04
			1243lm	4000K	AX103. 04
17W	160 mm	FL 28°	2141lm	3000K	AX154. 04
			2141lm	4000K	AX155. 04
		WF 38°	2530lm	3000K	AX150. 04
			2530lm	4000K	AX151. 04
		XF 60°	2463lm	3000K	AX152. 04
			2463lm	4000K	AX153. 04



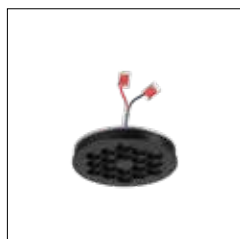
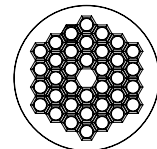
12,5 mm

60 mm



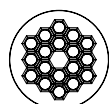
12,5 mm

120 mm



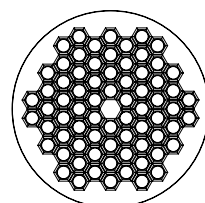
12,5 mm

90 mm



12,5 mm

160 mm



*2700K and 3500K on request.

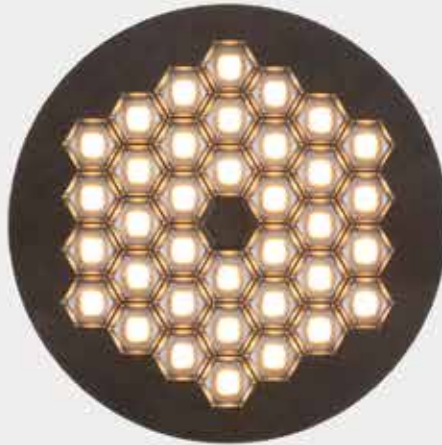
Light engine to be completed with accessories for different type of installations.



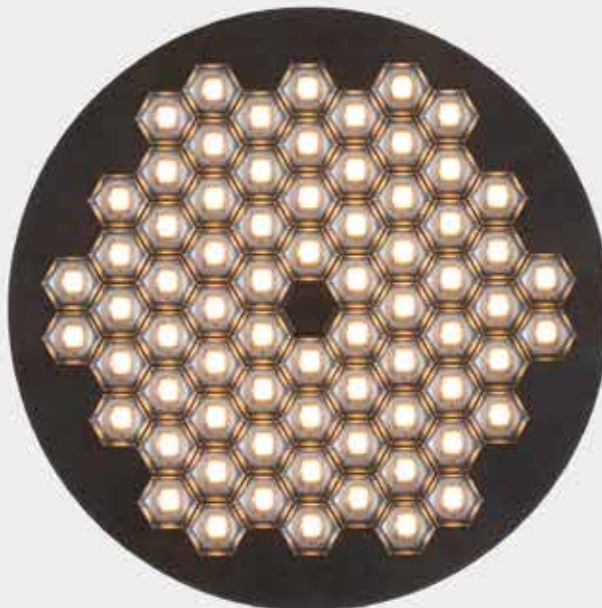
Helgoland 60



Helgoland 90



Helgoland 120



Helgoland 160

HELGOLAND ACCESSORIES



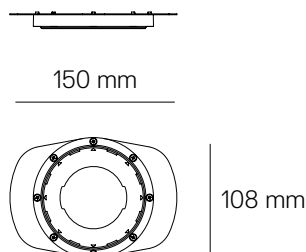
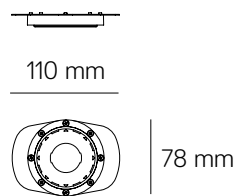
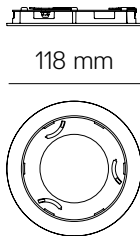
Light engine must be ordered separately.

Recessed

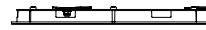
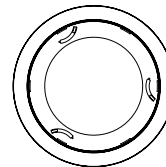
Frame	Type	Code
60mm	Trimless	AX50000
	Trim	AX501. 01/04/02/03/05
90mm	Trimless	AX55000
	Trim	AX551. 01/04/02/03/05
120mm	Trimless	AX60000
	Trim	AX601. 01/04/02/03/05
160mm	Trimless	AX65000
	Trim	AX651. 01/04/02/03/05



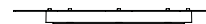
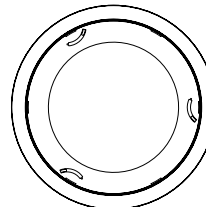
Trim



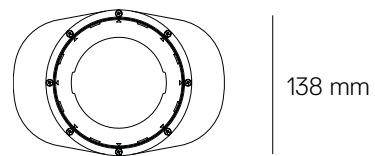
148 mm



188 mm



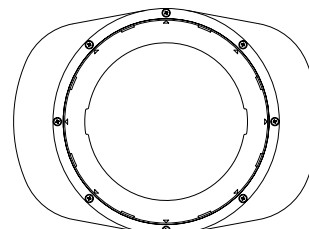
200 mm



138 mm



240 mm



178 mm

HELGOLAND ACCESSORIES

IP20

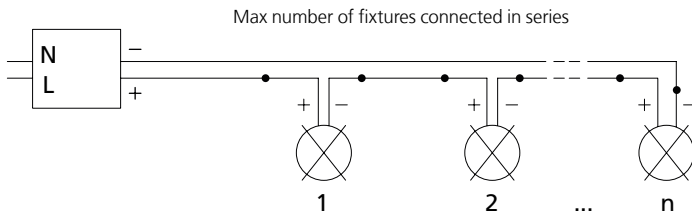
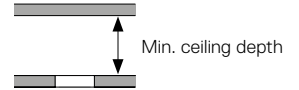


Power supply

W	Driver type	Code	L _{mm}	W _{mm}	H _{mm}	Circuit Breaker	Max distance **	Current setting	V _i module	N.fixtures in series connection	Min ceiling depth	Helgoland
22W	Undimmable	DV1037	146,5	42,5	22	A16: 30 B16: 50 C16: 70	20 m	300 mA	8,5 V	2 min - 4 max	150 mm	60 mm
								350 mA	17 V	2 max	90 mm	90 mm
								500 mA	17V	2 max	50 mm	120 mm
								500 mA	34V	1 max	30 mm	160 mm
25W	DALI dimmable	DV1003	164	38	24,5	A16: 30 B16: 50 C16: 70	15 m	300 mA	8,5 V	2 min - 5 max	170 mm	60 mm
								350 mA	17 V	2 max	80 mm	90 mm
								500 mA	17V	2 max	50 mm	120 mm
								500 mA	34V	1 max	30 mm	160 mm
50W	Artemide App	DV1104APP	124	79	22	A16: 15 B16: 30 C16: 50	15 m	350 mA	17 V	2 max	-	90 mm***
								500 mA	17V	2 max	70 mm	120 mm
								500 mA	34V	1 max	30 mm	160 mm






**See table related to wire sections on the instruction sheet.

***Driver must be removed.



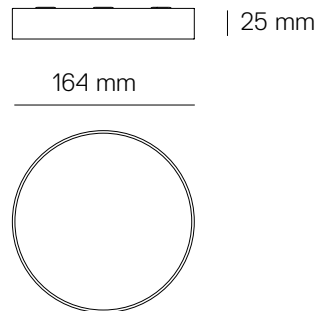
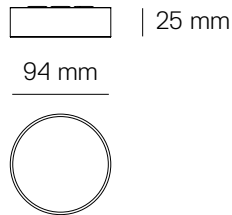
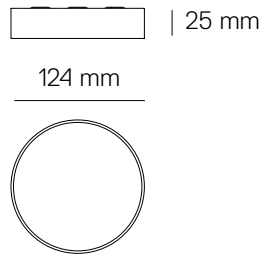
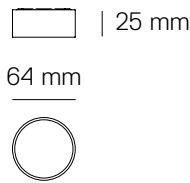
For recessed versions drivers have to be ordered separately.
Trim versions: driver substitution has to be done after frame removal only for 60 and 90 sizes.

HELGOLAND ACCESSORIES

White	Black	Cobalt blue	Copper	Silver	IP20
					
01	04	02	03	05	Light engine must be ordered separately.

SMD No driver

Frame	Type	Code
60 x h25 mm	No driver	AX510. 01/04/02/03/05
90 x h25 mm	No driver	AX560. 01/04/02/03/05
120 x h25 mm	No driver	AX610. 01/04/02/03/05
160 x h25 mm	No driver	AX660. 01/04/02/03/05



W	Driver type	Code	L _{mm}	W _{mm}	H _{mm}	Circuit Breaker	Max distance **	Current setting	V _i module	N.fixtures in series connection	Helgoland
22W	Undimmable	DV1037	146,5	42,5	22	A16: 30 B16: 50 C16: 70	20 m	300 mA	8,5 V	2 min - 4 max	60 mm
								350 mA	17 V	2 max	90 mm
								500 mA	17V	2 max	120 mm
								500 mA	34V	1 max	160 mm
25W	DALI dimmable	DV1003	164	38	24,5	A16: 30 B16: 50 C16: 70	15 m	300 mA	8,5 V	2 min - 5 max	60 mm
								350 mA	17 V	2 max	90 mm
								500 mA	17V	2 max	120 mm
								500 mA	34V	1 max	160 mm
50W	Artemide App	DV1104APP	124	79	22	A16: 15 B16: 30 C16: 50	15 m	350 mA	17 V	2 max	90 mm***
								500 mA	17V	2 max	120 mm
								500 mA	34V	1 max	160 mm

**See table related to wire sections on the instruction sheet.

For SMD no driver versions drivers have to be ordered separately and they must be removed.

HELGOLAND ACCESSORIES



IP20



Light engine must be ordered separately.

SMD Built-in driver

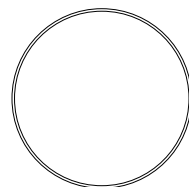
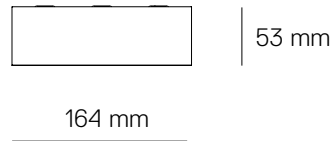
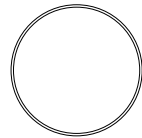
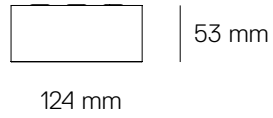
Frame	Type
120 x h53 mm	Built-in driver
160 x h53 mm	Built-in driver

Undimmable

Code
AX616. 01/04/02/03/05
AX666. 01/04/02/03/05

Dimmable DALI

Code
AX615. 01/04/02/03/05
AX665. 01/04/02/03/05

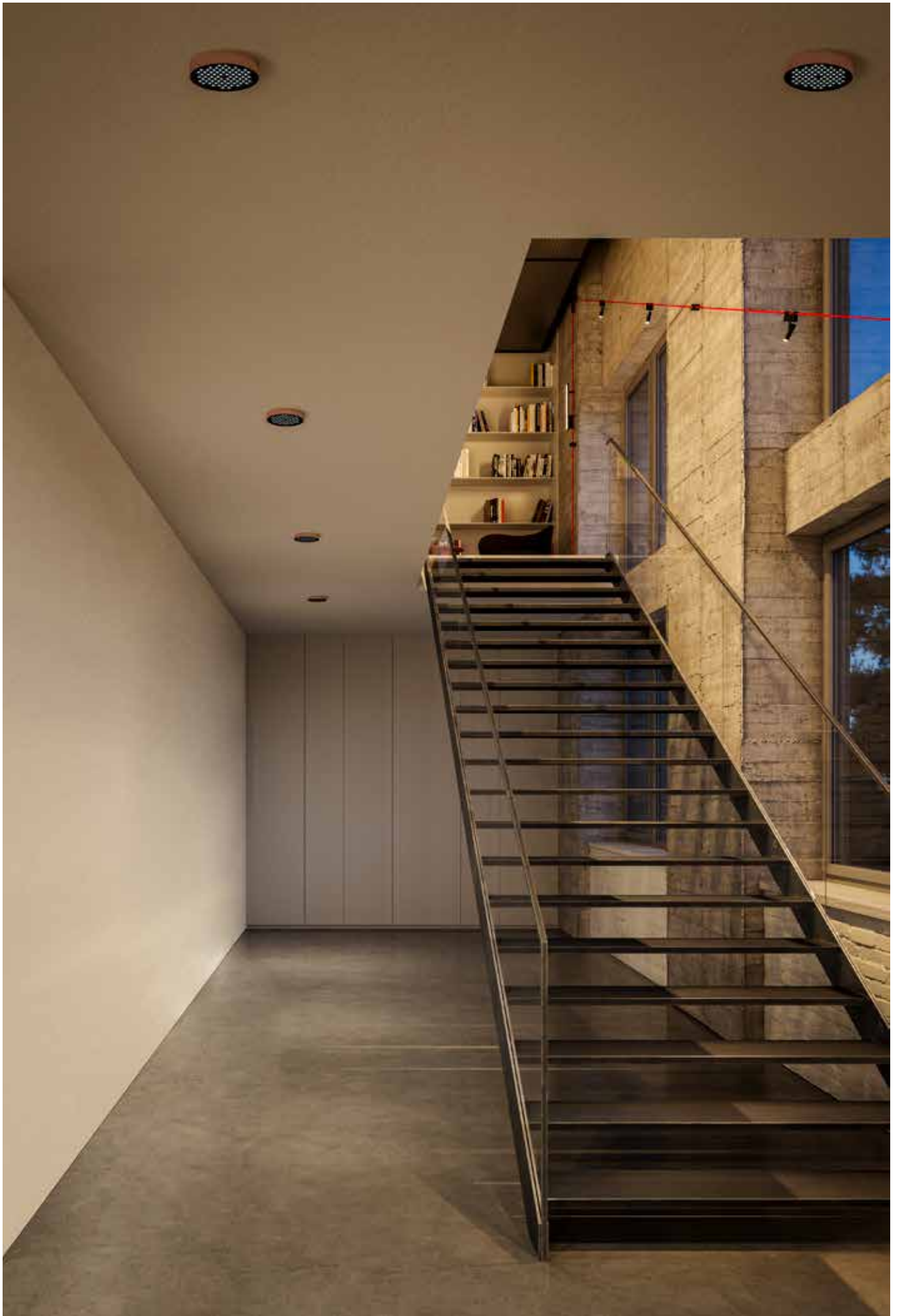


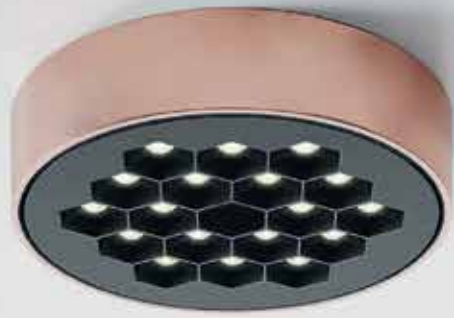
Workplaces

Meeting room - Helgoland 60 SMD No driver

Corridor - Helgoland 160 SMD No driver









Headquarters

Artemide S.p.A.
Via Bergamo, 18
20006 Pregnana Milanese (MI), Italy
Tel. +39 02 93518.1
Tel. +39 02 93526.1
Numero verde 800 834 093
(from Italy only)
info@artemide.com
artemide.com

Artemide S.p.A.
si riserva la facoltà di modificare, in qualunque momento e senza preavviso, le caratteristiche tecniche degli elementi illustrati nel presente catalogo.

Artemide S.p.A.
reserves the right to change, at any time and without prior warning, the technical specifications of any product illustrated in this catalogue.

Artemide S.p.A.
se réserve le droit de modifier, à n'importe quel moment et sans préavis, les caractéristiques techniques des éléments illustrés dans ce catalogue.

Artemide S.p.A.
behält sich das Recht vor jederzeit und ohne Ankündigung die technischen Daten der im Katalog abgebildeten Produkte zu ändern.

Artemide S.p.A.
se reserva la facultad de modificar, en cualquier y sin aviso previo, las características técnicas de los elementos ilustrados en el presente catálogo.

2025 updated version. V.2

For information regarding distributors
and points of sale, please visit our website
artemide.com or email: info@artemide.com